

PSHE Course Programme 2025-2026

Primary, Special & Secondary Schools



2025-2026
Produced by

PSHE Service
Sunley House
Summers Hill Drive
Papworth Everard CB23 3RG
01480 376256

pshe@cambridgeshire.gov.uk

Dear Colleague,

We have listened carefully to the needs of schools and have built a programme that we are sure will address the priorities of your school, children and community.

Any of the content of individual courses can be reconstructed for a school based programme, either in one school or a small group of schools. Please contact us if you wish to discuss such an arrangement.

You will note the reduced prices available to all our subscribing schools. If you are not yet a subscribing school, but would like to take advantage of these prices and all the other benefits of a subscription, please contact us for more details.

Please note that reduced prices for courses are also applicable to schools outside Cambridgeshire that hold a current licence for the Cambridgeshire Primary Personal Development Programme.

Cambridgeshire subscribing schools have the option of one free course place instead of consultancy time. If you are using your "free course credit", please select that option when booking.

To book a place on a course, please go to the Learn Together website [here](#).

Please contact us if you have any queries.

We look forward to welcoming you to our courses.

Steph Hoskin and Cathy Murphy
Lead Advisers, PSHE Service
01480 376256
pshe@cambridgeshire.gov.uk

"Thank you - I found this course excellent due to the clarity of presentation and information...it has not only increased my confidence and understanding, but it has also supported / will support professional development planning for all adults working in school."

"(The leaders) were amazing. Very warm and inviting, and absolute experts in their field. The session was factual, pacy and dynamic. I felt very comfortable to share my ideas and enjoyed listening to others' in a safe and inclusive environment. Thank you!"

"Thank you so much for a great course, really informative, relevant, helpful and friendly. So pleased I booked onto this course!"

"The two course leaders were engaging, approachable and gave lots of opportunity for sharing of practice across the team. It was a delight to attend and provided lots of helpful information to support"

Contents

Anti-bullying Course & Briefings Programme	Page 5
Childhood Anxiety & Understanding EBSA	Page 7
Building & Sustaining Mental Health & Relationships Programme Resources in Your School	Page 8
Midday Supervisor Training	Page 10
RSE – Short Webinar Series	Page 11
Secondary PSHE Leaders' Network Meetings	Page 12
Body Image	Page 13
Delivering Statutory Safeguarding Requirements in the PSHE Curriculum	Page 14
Digital Lifestyles for Primary Schools	Page 15
Drug & Alcohol Education in Primary & Special Schools	Page 16
Exploring Gender	Page 17
Equality, Diversity & Inclusion for Primary, Special & Secondary Schools	Page 18
New to Leading PSHE in Primary & Special Schools	Page 19
Practical Approaches to Teaching PSHE	Page 20
PSHE & Personal Development: Preparing for Ofsted	Page 21
PSHE Network Meeting Primary & Special Schools	Page 22
RSE – Developing RSE in Primary & Special Schools	Page 23
RSE – Teaching RSE in Primary & Special Schools	Page 24

Anti-Bullying Course & Briefings Programme

Audience: Primary, Special and Secondary leaders, PSHE leaders, classroom teachers, support staff or governors

Aims

- To raise awareness and confidence on a range of issues relating to preventing and responding to bullying.

Description

These courses and briefings are funded by Public Health and are free to all Cambridgeshire schools. Multiple people from each school may attend. Colleagues may sign up to attend 'live' or to receive the recordings.

Course: Preventing and Responding to Bullying

Venue	Sessions	Date	Time
Online By Teams	Primary/Special	20.11.25	3.45pm-5.15pm
Online By Teams	Primary/Special	25.02.26	3.45pm-5.15pm
Online By Teams	Secondary/Special	26.02.26	3.45pm-5.15pm

Briefing: Preventing Homophobic, Biphobic and Transphobic (HBT) Bullying

Venue	Sessions	Date	Time
Online By Teams	Primary/Special	23.09.25	3.45pm-4.45pm
Online By Teams	Secondary/Special	25.09.25	3.45pm-4.45pm

Briefing: Banter or Bullying?

Venue	Sessions	Date	Time
Online By Teams	Secondary/Special	05.11.25	3.45pm-4.45pm



Briefing: Developing Anti-Bullying Policy including Defining Bullying

Venue	Sessions	Date	Time
Online By Teams	Primary/Special	20.01.26	3.45pm-4.45pm
Online By Teams	Secondary/Special	22.01.26	3.45pm-4.45pm

Briefing for Governors- Anti-bullying – Primary, Secondary and Special

Venue	Sessions	Date	Time
Online By Teams		04.03.26	3.45pm-4.45pm

Cambridgeshire Schools (maintained & academy) can attend for free.

Schools from Peterborough and other counties may also attend. Cost: £40 for licence holders of the Primary Personal Development Programme, £55 for non-licence holders

To book, visit <https://cambridge.council.bookingbug.com/home/w2499204>

For more information: 01480 376256 or pshe@cambridgeshire.gov.uk



Childhood Anxiety & Understanding EBSA

Audience: Primary, Special and Secondary leaders, PSHE leaders, classroom teachers, support staff or governors.

Aims

- To develop a greater understanding of childhood anxiety and Emotionally Based School Avoidance (EBSA)
- To explore resilience and protective factors for individuals and schools.

Description

This course will allow colleagues with a variety of roles in school to develop shared language, understand more about factors affecting children and young people's mental health and consider factors affecting their school attendance.

This course can also be delivered in schools to staff groups, funded by Public Health.

Venue	Sessions	Date	Time
Online By Teams	Primary/Special	08.07.25	9.30am-11.00am
Online By Teams	Primary/Special	24.11.25	1.30pm-3.00pm
Online By Teams	Primary/Special	12.03.26	3.45pm-5.15pm
Online By Teams	Secondary/Special	08.01.26	2.15pm-3.45pm

Cambridgeshire Schools (maintained & academy) can attend for free.

Schools from Peterborough and other counties may also attend. Cost: £40 for licence holders of the Primary Personal Development Programme, £55 for non-licence holders

To book, visit <https://cambridge.council.bookingbug.com/home/w2499204>

For more information: 01480 376256 or pshe@cambridgeshire.gov.uk



Building & Sustaining Mental Health & Relationships Programme Resources In Your School

Course 1: Building the Mental Health and Relationships Programme in your school

Audience: PSHE leads, Wellbeing Leads, Mental Health Leads, senior leaders

Description: This course will outline the two key resources 'Conflict Resolution and Peer Mediation' and 'Promoting Healthy Friendships'. These resources are available free to all Cambs primary schools. They support with a whole school approach to building conflict resolution skills, positively impacting on children's autonomy to negotiate 'fallings out' on the playground. Schools may choose to further this work and implement a Peer Mediator programme. The 'Promoting Healthy Friendships' resource may be used with small groups or whole classes in KS2 to understand and prevent unhealthy friendship patterns.

The course will look at the resources themselves, and the underpinning theories relating to building empathy and 'theory of mind'. Attendees will be directed to further resources which will enable them to explore these concepts in other areas, such as stereotyping, online relationships etc.

Venue	Sessions	Date	Time
Sunley House, Papworth Everard		07.10.25	1.30pm-4.30pm

Course 2: Practitioners' Briefing : Conflict Resolution and Peer Mediation

Audience: Any colleague who is delivering the Conflict Resolution units of work, leading peer mediator training or supervising peer mediators.

Description: This course is offered annually for any schools where the Conflict Resolution and Peer Mediation Programme is in use. It is for any members of staff who are new to leading the programme, or who wish to develop it to build awareness and confidence.

Venue	Sessions	Date	Time
By Teams		13.01.26	3.45pm-4.45pm



Course 3: Practitioners' Briefing : Promoting Healthy Friendships Pack

Audience: Any colleague who is using or wishing to use the Promoting Healthy Friendships Pack.

Description: This course is offered annually for any schools where the Promoting Healthy Friendships' Pack is in use. It is for any members of staff who are new to leading the programme, or who wish to develop it to build awareness and confidence.

Venue	Sessions	Date	Time
By Teams		14.01.26	3.45pm-4.45pm

Cambridgeshire Schools (maintained & academy) can attend for free.

Schools from Peterborough and other counties may also attend. Cost: £40 for licence holders of the Primary Personal Development Programme, £55 for non-licence holders

To book, visit <https://cambridge.council.bookingbug.com/home/w2499204>

For more information: 01480 376256 or pshe@cambridgeshire.gov.uk



Midday Supervisor Training

Resolving Conflicts at Playtimes for Midday Supervisors

Audience: Midday supervisors and any staff supporting children at lunchtimes

Aims

To enable colleagues to further understand principles and practice to help children resolve conflicts

To build awareness of and confidence in using a 5 step formula for resolving conflicts

Venue	Sessions	Date	Time
Online By Teams		02.12.25	1.45pm-2.45pm
Online By Teams		11.02.26	11.00am-12.00pm

Healthy Eating Messages for Midday Supervisors

Aims

To build awareness and confidence for Midday Supervisors and kitchen staff about positive messages to give to children about their food.

To help children to choose a range of foods and suitable portions.

Venue	Sessions	Date	Time
Online By Teams		25.11.25	1.45pm-2.45pm
Online By Teams		10.02.26	11.00am-12.00pm

Both the above courses are tailored to the needs of Midday supervisors. They will use practical examples and give time for colleagues to consider the most helpful approaches in their school.

Cambridgeshire Schools (maintained & academy) can attend for free.

Schools from Peterborough and other counties may also attend. Cost: £40 for licence holders of the Primary Personal Development Programme, £55 for non-licence holders

To book, visit <https://cambridge.council.bookingbug.com/home/w2499204>

For more information: 01480 376256 or pshe@cambridgeshire.gov.uk



RSE - Short Webinar Series

Audience: Primary, Special and Secondary leaders, PSHE leaders, classroom teachers, support staff or governors

Aims

- To build resilience in schools to manage developments in RSE and confidently move forward in providing high quality provision in key topics

Description

These 3 short briefings are funded by Cambridgeshire Public Health. They are designed to address areas of potential concern, to raise awareness and build confidence for teaching staff and school leaders, including governors. Colleagues booking places will be asked to contribute to the evaluation of the programme through online forms. Colleagues may sign up for one or more of the courses. Multiple attendees from each school are welcome. Recordings of the briefings will be available.

Relationships Education (primary), RSE (secondary) and Health Education are statutory in all schools. These briefings will help all members of the school community build confidence in addressing different aspects of Relationships Education and RSE provision.

Briefing 1 –Gathering Pupil and parent views

Venue	Sessions	Date	Time
Online By Teams	Primary	14.10.25	3.45pm-4.45pm
Online By Teams	Secondary/Special	16.10.25	3.45pm-4.45pm

Briefing 2 – RSE for SEND

Venue	Sessions	Date	Time
Online By Teams	Primary	02.12.25	3.45pm-4.45pm
Online By Teams	Secondary/Special	04.12.25	3.45pm-4.45pm

Briefing 3 – DfE guidance and Curriculum and Assessment review

Venue	Sessions	Date	Time
Online By Teams	Primary	27.01.26	3.45pm-4.45pm
Online By Teams	Secondary/Special	29.01.26	3.45pm-4.45pm

Cambridgeshire Schools (maintained & academy) can attend for free.

Schools from Peterborough and other counties may also attend. Cost: £40 for licence holders of the Primary Personal Development Programme, £55 for non-licence holders

To book, visit <https://cambridge.council.bookingbug.com/home/w2499204>

For more information: 01480 376256 or pshe@cambridgeshire.gov.uk



Secondary PSHE Leaders' Network Meetings

Audience: Special and Secondary PSHE leaders and other school leaders responsible for Personal Development, Mental Health and Emotional Wellbeing and other such areas.

Aims

- To share ideas, information and resources relating to the PSHE Curriculum in KS3-5.
- To share updates and current national developments.
- To work collaboratively to support each other

Description

These Network Meetings are funded by Public Health and are free to all Cambridgeshire schools. Multiple people from each school may attend. Colleagues may sign up to attend any number of network meetings.

Network Meeting Summer 2025

Venue	Sessions	Date	Time
Online By Teams		23.06.25	3.45pm-4.45pm

Network Meeting Autumn 2025

Venue	Sessions	Date	Time
Online By Teams		10.12.25	3.45pm-4.45pm

Network Meeting Spring 2026

Venue	Sessions	Date	Time
Online By Teams		16.03.26	3.45pm-4.45pm

Cambridgeshire Schools (maintained & academy) can attend for free.

Schools from Peterborough and other counties may also attend. Cost: £40 for licence holders of the Primary Personal Development Programme, £55 for non-licence holders

To book, visit <https://cambridge.council.bookingbug.com/home/w2499204>

For more information: 01480 376256 or pshe@cambridgeshire.gov.uk



Body Image

This course is for PSHE Leaders and Key Stage 2 teachers in primary schools. It will address challenges, issues and influences children face, and how schools can enable them to feel more confident about themselves and their bodies.



Aims:

- To address ways of enabling children to engage with the challenges they currently face, and may face in the future, with regard to body image.
- To enable participants to develop their confidence in addressing current influences and issues affecting children's body image.
- To explore ways of enabling children to develop strategies for addressing their own body image positively.
- To explore teaching methodologies which can support children to develop their skills in media literacy.

Wednesday 5th November 2025

9.30am - 11.30am

OR

Tuesday 17th February 2026

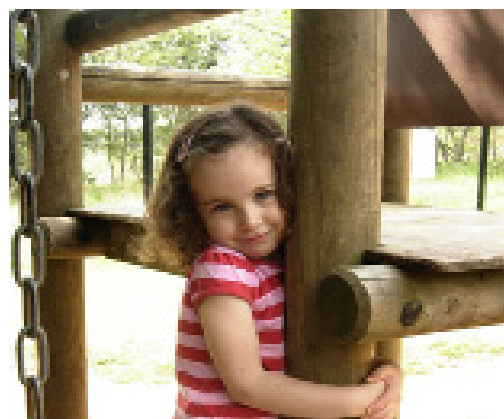
1.30pm - 3.30pm

These courses will be hosted on Teams. You will receive a booking confirmation and, nearer the time, the Teams login.

£55 for non-subscribing schools

£40 for subscribing schools

Steph Hoskin



For more information: 01480 376256 or
pshe@cambridgeshire.gov.uk

To book, visit <https://cambridge.council.bookingbug.com/home/w2499204>



Delivering Statutory Safeguarding Requirements in the PSHE Curriculum

This course will enable participants to become familiar with the Personal Safety units of work from the Cambridgeshire Personal Development Programme, develop confidence in teaching children how to recognise and report abuse and consider how effective delivery of this aspect of the PSHE Curriculum can enhance the school's wider safeguarding culture. This course is particularly useful for PSHE Leads and Designated Safeguarding Leads in Primary & Special Schools.



Wednesday 15th October 2025

1.30pm - 3pm

This course will be hosted on Teams. You will receive a booking confirmation and, nearer the time, the Teams login.

£55 for non-subscribing schools

£40 for subscribing schools

Cathy Murphy & Faye Missin

Aims:

- To build awareness of curriculum requirements in Relationships Education and Health Education, particularly the 'Being Safe' strand of Relationships Education.
- To develop understanding of effective methodologies for this part of the PSHE Curriculum.
- To explore a range of teaching activities, recommended books and resources that can support children to recognise when they are feeling unsafe, develop the vocabulary and confidence to report abuse and know how they can access help and support.
- To reflect on specific considerations for teaching children these topics when abuse is known or suspected, or where teaching leads to a disclosure.

Relationships and Health Education is statutory in Primary Schools. This course will address ways of fulfilling the requirements of the 'Being Safe' aspect of Relationships Education and how this can contribute positively to a school's safeguarding culture and meeting duties in Keeping Children Safe in Education.

For more information: 01480 376256 or
pshe@cambridgeshire.gov.uk

To book, visit <https://cambridge.council.bookingbug.com/home/w2499204>



Digital Lifestyles for Primary Schools

This course will enable participants to develop a positive approach to teaching about Digital Lifestyles across PSHE and Computing. It will take a holistic approach, balancing the positive benefits of the use of technologies, the skills they will need to maintain positive relationships online, and the risks they will need to manage along the way.



Aims:

- To build awareness of curriculum requirements in Computing, Relationships Education and Health Education.
- To explore the current national and local trends, and own school context, that might help to inform the curriculum offer and further enhancements.
- To explore ways of enabling children to develop strategies for making the use of technology a positive aspect of their lives.
- To address ways of enabling children to engage with digital lifestyle challenges.

Tuesday 5th May 2026

9.30am-11.30am

This course will be hosted on Teams. You will receive a booking confirmation and, nearer the time, the Teams login.

£55 for non-subscribing schools

£40 for subscribing schools

Steph Hoskin & Laura Barnes



Relationships and Health Education is statutory in primary schools. This course will address ways of fulfilling the requirements for Online Relationships and Internet Safety and Harms.

For more information: 01480 376256 or
pshe@cambridgeshire.gov.uk

To book, visit <https://cambridge.council.bookingbug.com/home/w2499204>



Drug and Alcohol Education in Primary & Special Schools

This course supports staff in reviewing drug policy and drug education in primary and special schools. We will consider drug education in the wider context of Health Education, safeguarding and PSHE and look at robust procedures for responding to situations and incidents.



Aims:

- To develop awareness of the nature and effects of medical, recreational; legal and illegal drugs.
- To develop awareness of patterns of drug use amongst young people.
- To build confidence in developing a whole school drug policy.
- To develop understanding of the drug-related awareness levels of children in primary school.
- To develop confidence in working with primary children in drug education and drug related-situations.

Wednesday 11th February 2026

3.30pm - 5.30pm

This course will be hosted on Teams. You will receive a booking confirmation and, nearer the time, the Teams login.

£55 for non-subscribing schools

£40 for subscribing schools

Cathy Murphy



Relationships and Health Education is statutory in Primary Schools. This course will address ways of fulfilling the requirements for Drugs and Alcohol, Health Education.

For more information: 01480 376256 or
pshe@cambridgeshire.gov.uk

To book, visit <https://cambridge.council.bookingbug.com/home/w2499204>



Exploring Gender

This course supports staff to consider challenging stereotypes, understanding gender and preventing sexism in primary, special and secondary schools. It includes approaches to reviewing policy and practice, a review of the national picture, consideration of the school environment and developing awareness of inclusivity across the whole school. Participants will consider implications for mental health.



Aims:

- To develop understanding of the benefits for individuals of inclusive, respectful approaches to gender.
- To reflect on whole school awareness of and approaches to reducing sexism and sexist language.
- To develop awareness of supportive materials for developing awareness of gender across the school community.
- To reflect on current practice and plan priorities for action.

For more information: 01480 376256 or
pshe@cambridgeshire.gov.uk

To book, visit <https://cambridge.council.bookingbug.com/home/w2499204>

Tuesday 24th February 2026

3.30pm - 5.30pm

OR

Wednesday 3rd June 2026

2pm - 3.30pm

These courses will be hosted on Teams. You will receive a booking confirmation and, nearer the time, the Teams login.

£55 for non-subscribing schools

£40 for subscribing schools

Cathy Murphy



Relationships Education and Health Education are statutory in all maintained schools. This course will help leaders to ensure their provision is in line with statutory requirements.



Equality, Diversity & Inclusion For Primary, Special & Secondary Schools

This course supports primary, secondary and special schools in developing understanding of diversity and equality, relating in particular to race and ethnicity, but including reference to the protected characteristics (Equalities Act 2010). It includes approaches to reviewing policy and practice, a review of the national picture, consideration of the school environment and developing awareness of inclusivity across the whole school.



Aims:

- To develop understanding of the benefits for individuals of inclusive, respectful approaches to diversity, challenging stereotypes and building inclusive environments.
- To consider the statutory requirements to consider stereotypes, respect and diversity, through statutory Relationships Education (Primary) and RSE (Secondary).
- To develop confidence in creating and developing inclusive school environments .
- To reflect on current practice and resources.

Thursday 27th November 2025

1.30pm - 3.30pm

OR

Wednesday 10th June 2026

3.30pm - 5.30pm

These courses will be hosted on Teams. You will receive a booking confirmation and, nearer the time, the Teams login.

£55 for non-subscribing schools

£40 for subscribing schools

Cathy Murphy

Relationships Education and Health Education are statutory in all maintained schools. This course will help coordinators to ensure their provision is in line with statutory requirements.



For more information: 01480 376256 or pshe@cambridgeshire.gov.uk

To book, visit <https://cambridge.council.bookingbug.com/home/w2499204>



New to Leading PSHE in Primary & Special Schools

This course includes exploring and developing the role of the PSHE Leader, whole school approaches to promoting health and wellbeing, and practical approaches and tools for planning, delivering and assessing PSHE. The course is particularly relevant for those new to leading PSHE.



Aims:

- To reflect on the role of the PSHE Leader and to consider strengths and areas for development.
- To begin to review and plan the school's curriculum for PSHE and Citizenship.
- To learn about the Primary Personal Development Programme and how to implement it in school.
- To develop practical approaches to teaching and learning in PSHE.
- To understand how to develop a whole school approach to promoting health and wellbeing.
- To learn about the current national and local context for PSHE in schools.

Although many of the resources used are from the Primary Personal Development Programme (part of the PSHE Service wellbeing subscription), PSHE Leaders from non-subscribing schools are welcome to attend, and will receive samples of the resources.

Wednesday 22nd October 2025

9.30am - 4.30pm

Armstrong House, Ermine Business Park,
Sovereign Court, Lancaster Way,
Huntingdon PE29 6XU

OR

Wednesday 17th June 2026

1.30pm - 3.30pm

This course will be hosted on Teams. You will receive a booking confirmation and, nearer the time, the Teams login.

Face to Face Courses

£140 for non-subscribing schools
£115 for subscribing schools

On Line Courses

£55 for non-subscribing schools
£40 for subscribing schools

Steph Hoskin & Laura Barnes



For more information: 01480 376256 or
pshe@cambridgeshire.gov.uk

To book, visit <https://cambridge.council.bookingbug.com/home/w2499204>



Practical Approaches to Teaching PSHE

This course includes practical approaches, methods, resources, activities and ideas for engaging children in their learning in PSHE and Citizenship. These can also be used to enhance teaching and learning in other subject areas.



Tuesday 10th March 2026

9.30am - 12.30pm

Sunley House, Summers Hill Drive,
Papworth Everard, CB23 3RG

£85 for non-subscribing schools

£70 for subscribing schools

Steph Hoskin

Aims:

- To develop confidence in delivering interactive approaches to learning
- To provide strategies for building positive climates and relationships
- To enable teachers to understand the context of an entitlement programme for PSHE and citizenship
- To learn more about programmes and approaches such as Circle Time, Raccoon Circles, use of drama and puppets and discussion techniques

This course is particularly suitable for teachers who are newly or recently qualified, and for those who are less experienced in teaching PSHE & Citizenship.



For more information: 01480 376256 or
pshe@cambridgeshire.gov.uk

To book, visit <https://cambridge.council.bookingbug.com/home/w2499204>



PSHE & Personal Development: Preparing for Ofsted

This course aims to support PSHE Subject leaders and/or senior leaders at primary, secondary and special schools to prepare for the Personal Development aspect of an Ofsted inspection. We are mindful of the fact that every inspection is different, and we can't necessarily pre-empt everything that might be asked. However, many subject leaders have felt some guidance and examples of what and how to evidence were helpful in preparing for a visit and showcasing strengths.



Aims:

- To develop an understanding of what participants might expect from an inspection, including meeting with the inspector/s, lesson observations, pupil voice, and discussions with staff members.
- To provide the opportunity to reflect on curriculum intent, implementation and impact.
- To support participants in highlighting elements of personal development as part of a whole school narrative.

Thursday 13th November 2025

1.30pm - 3.30pm

This course will be hosted on Teams. You will receive a booking confirmation and, nearer the time, the Teams login.

£55 for non-subscribing schools

£40 for subscribing schools

OR

Wednesday 18th March 2026

1.30pm - 4.30pm

Sunley House, Summers Hill Drive,
Papworth Everard, CB23 3RG

£85 for non-subscribing schools

£70 for subscribing schools

Laura Barnes



For more information: 01480 376256 or
pshe@cambridgeshire.gov.uk

To book, visit <https://cambridge.council.bookingbug.com/home/w2499204>



PSHE Network Meeting Primary & Special Schools

Network meetings provide an opportunity to meet and engage with fellow PSHE leaders and to share good practice with colleagues from other schools. We will provide updates on the Primary Personal Development Programme, and also national and local developments in PSHE, and any relevant supporting areas.



Aims:

- To enable PSHE Leaders to network and share practice.
- To provide information about developments in PSHE locally and nationally.
- To share updates to the Primary Personal Development Programme and other PSHE Service news.

Network meetings, part of the Wellbeing Subscription, include national and local updates on PSHE and opportunities to share practice. Non-subscribing schools or those from schools beyond Cambridgeshire are welcome to attend for a charge of £50, but please note the content will be focussed around the Cambridgeshire materials and local support.

To book, visit <https://cambridge.council.bookingbug.com/home/w2499204>

Tuesday 11th November 2025

OR

Wednesday 19th November 2025

These courses will be hosted on Teams.

AND

Wednesday 13th May 2026

Cambridgeshire FA Ltd, Bridge Road,
Impington, Cambridge CB24 9PH

OR

Tuesday 19th May 2026

Armstrong House, Ermine Business Park,
Sovereign Court, Lancaster Way,
Huntingdon PE29 6XU

You only need to attend one event in the
Autumn term and one in the Summer term

All dates:

2.30pm - 4.30pm

Steph Hoskin & Laura Barnes



For more information: 01480 376256 or
pshe@cambridgeshire.gov.uk



RSE - Developing RSE in Primary & Special Schools

This course supports staff in reviewing policy and practice in Relationships & Sex Education in primary and special schools, including a review of the national picture, consideration of the aims for RSE and methods for developing policy across the whole school. It is particularly suited to PSHE Leaders, senior leaders and governors.



Aims:

- To reflect on local and national developments in RSE for primary and special schools.
- To develop awareness of Relationships Education Policy and how to customise it in school.
- To develop awareness of supportive materials for developing RSE across the school community.
- To reflect on current practice and plan priorities for action in developing RSE.

Wednesday 12th November 2025

1.30pm - 3.30pm

OR

Monday 27th April 2026

3.30pm - 5pm

These courses will be hosted on Teams. You will receive a booking confirmation and, nearer the time, the Teams login.

£55 for non-subscribing schools

£40 for subscribing schools

Cathy Murphy



For more information: 01480 376256 or
pshe@cambridgeshire.gov.uk

To book, visit <https://cambridge.council.bookingbug.com/home/w2499204>



RSE - Teaching RSE in Primary & Special Schools

This course supports staff in primary and special schools, especially those new to teaching Relationships & Sex Education (RSE) and those leading PSHE, in developing awareness of the progression of RSE learning objectives and building confidence in delivering high quality provision which meets the needs of children.



Aims:

- To develop strategies for responding to children's questions relating to RSE.
- To develop confidence in using scientific vocabulary.
- To consider the role of RSE in understanding about consent, personal safety and assertiveness.
- To develop awareness of Cambridgeshire materials for delivering RSE.

If you are reviewing or developing RSE in your school, you might also like to attend our course Developing RSE.

Tuesday 18th November 2025

1.30pm - 3.30pm

OR

Wednesday 6th May 2026

3.30pm - 5.30pm

These courses will be hosted on Teams. You will receive a booking confirmation and, nearer the time, the Teams login.

£55 for non-subscribing schools

£40 for subscribing schools

Cathy Murphy



For more information: 01480 376256 or
pshe@cambridgeshire.gov.uk

To book, visit <https://cambridge.council.bookingbug.com/home/w2499204>

