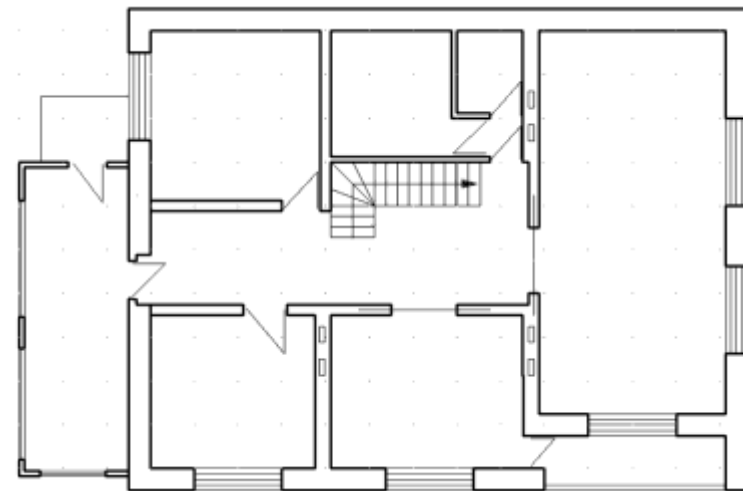




Cambridgeshire
County Council



The At Home Maths Trail for KS2



Be a Maths Detective...



Chen has taken a picture of his back garden...

1. Estimate the number of rectangles you can see in the picture.
2. Chen's brother says that the path is made up of only rectangles while Chen thinks there are squares as well. Explain who is right.
3. Estimate the fraction of the picture that is grass.



Your go...



Chen has a bowl of coins in his living room. Can you write 4 maths detective questions for someone else in your family to answer?
(Remember to keep the answers a secret.)



Here are Chen's questions



1. What shapes are the faces of the 20p and the 50p coins?
2. Which is the most common coin in the bowl?
3. Chen thinks there is less than £10 in the bowl. Do you agree? Explain your thinking.
4. What do you think is the total amount of money in the bowl?

Your go...



Here are two more pictures from Chen's home. Can you write two maths detective questions for each picture?



Make your own maths trail

1. Using a phone / tablet take up to 9 pictures from around your house and garden that you could ask a maths question about.

Questions could be about
time, length, money,
addition, subtraction,
shape... anything to do with
maths.





Make your own maths trail

2. Organise the pictures and questions so there is a clear order to them. E.g. you may start up stairs, come down stairs and then go out into the garden or vice versa.

3. Insert the pictures and the questions into a document which can then be given to the person completing the maths trail.





Make your own maths trail

4. Give your completed maths trail to someone to complete.
5. Good luck and have fun.

Remember to keep the answers to the questions you have written safe and somewhere the person who is doing the maths trail can't find them.

